

WARNING

You must return this paper with your answer book. Otherwise marks will be lost.

Write your Examination Number here:



Coimisiún na Scrúduithe Stáit State Examinations Commission

JUNIOR CERTIFICATE EXAMINATION, 2018

GEOGRAPHY – ORDINARY LEVEL

SECTION 1 – FOLDER (60 marks)

FRIDAY 8 JUNE – MORNING 9:30 – 11:30

NOTE: SECTION 2 OF THIS PAPER IS SUPPLIED SEPARATELY

SECTION 1 (60 marks)

Answer **ALL** questions.
You have a choice within four questions.
Be sure to return this folder with your answer book.
Otherwise, marks will be lost.

1. MASS MOVEMENT

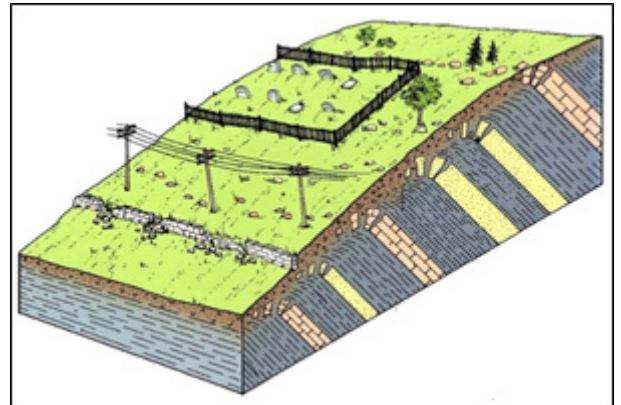
Examine the diagram opposite.

The type of mass movement shown in the diagram is:

An avalanche ☐

Soil creep ☐

A landslide ☐



Amended from www.geogrify.net

Tick (✓) the correct box.

2. EARTHQUAKES

Earthquakes often occur:

In Ireland. ☐

At the edge of plates. ☐

At the centre of plates. ☐

In tundra zones. ☐

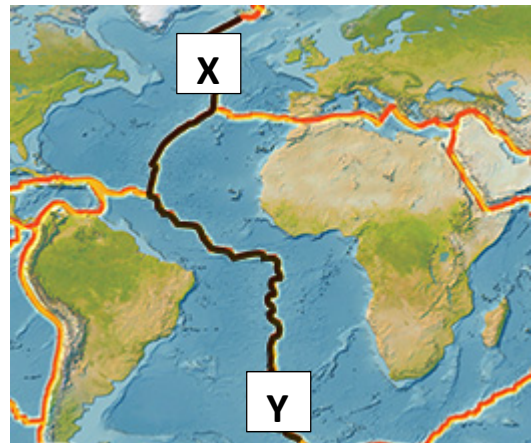
Tick (✓) the correct box.

3. PLATE MOVEMENT

Along the line **X-Y** on the map opposite, plates are separating on the earth's crust.

The line **X-Y** is called the:

- Pacific Ring of Fire ☐
- San Andreas Fault ☐
- Mid-Atlantic Ridge ☐
- Mantle ☐



Amended from www.buzzle.com

Tick (✓) the correct box.

4. RIVERS

The fine material that is transported and deposited by rivers is called:

- Boulder clay ☐
- Tombolo ☐
- Alluvium ☐

Tick (✓) the correct box.

5. ENVIRONMENT

Trees, like the ones in the photograph opposite, are killed by:

- Abrasion ☐
- Acid rain ☐
- Ozone ☐
- Mechanical weathering ☐



Amended from www.nationalgeographic.com

Tick (✓) the correct box.

6. CLIMATE TYPES

Which of the following climate types is most associated with the vegetation shown in the photograph opposite?

Hot Desert ☐

Equatorial ☐

Mediterranean ☐



Amended from www.theos.in/wp-content

Tick (✓) the correct box.

7. TRANSPORT AND INDUSTRY

The type of transport best suited for deliveries to factories located at the edge of a city is:

A lorry ☐

A ship ☐

An aeroplane ☐

Tick (✓) the correct box.

8. TYPES OF AID

Bilateral aid is the type of aid given by:

One country to another country. ☐

A group of countries like the European Union. ☐

Organisations like the United Nations. ☐

Non-government organisations (NGOs). ☐

Tick (✓) the correct box.

9. ANSWER EITHER 9A OR 9B

9A. COASTS

The coastal landform labelled **X** in the photograph opposite is called a:

Cave ☐

Tombolo ☐

Blowhole ☐

Tick (✓) the correct box.



Amended from www.thewelltravelledman.com

OR

9B. GLACIATION

The glacial landform in the photograph opposite is a:

U-shaped valley ☐

Drumlin ☐

Moraine ☐

Tick (✓) the correct box.



Amended from www.dkfindout.com

10. ANSWER EITHER 10A OR 10B

10A. THE WEATHER STATION

The weather instrument opposite is called:

A wind vane ☐

A barometer ☐

A hygrometer ☐

An anemometer ☐



Amended from www.compactanalysis.com

Tick (✓) the correct box.

OR

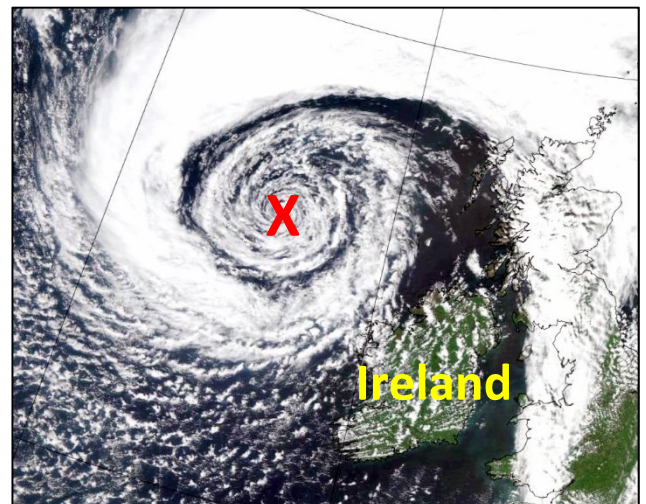
10B. WEATHER SYSTEMS

The satellite image opposite shows a weather system off the North-West coast of Ireland (**X**).

This weather system (**X**) is called:

A depression (low pressure) ☐

An anti-cyclone (high pressure) ☐



Amended from www.phys.org

11. ANSWER EITHER 11A OR 11B

11A. SOILS

The diagram opposite shows a soil profile.

Each of the layers in the soil profile is called:

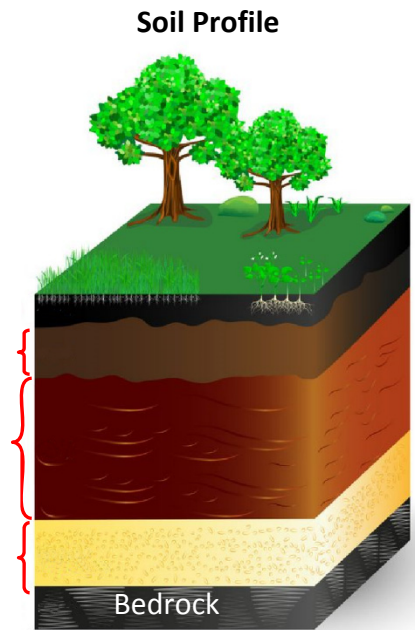
An horizon ☐

Leaching ☐

Humus ☐

Gley ☐

Tick (✓) the correct box.



Amended from www.pinimg.com

OR

11B. MIGRATION

The photograph opposite shows the Irish Naval Service rescuing people in the Mediterranean Sea. These migrants are fleeing war and poverty.

War and poverty are:

Pull-factors ☐

Push-factors ☐

Tick (✓) the correct box.



Irish Defence Forces

12. ANSWER EITHER 12A OR 12B

12A. COMMUNICATION LINKS

If you travelled from Sligo to Dublin, in which direction would you be travelling?

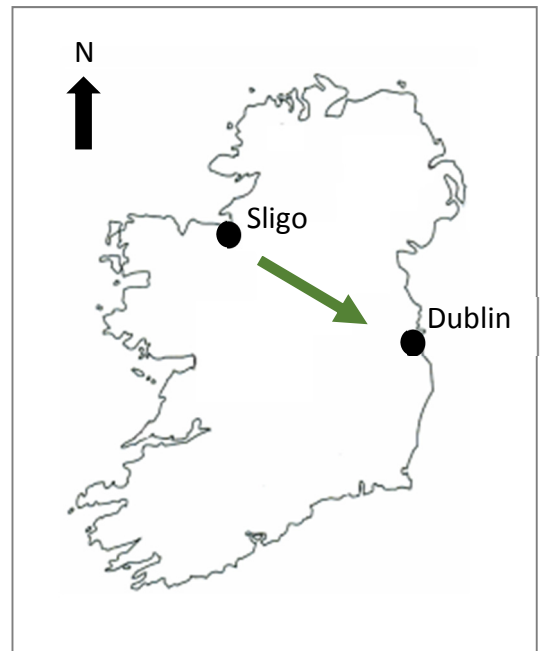
From South-East to North-West ☐

From South-West to North-West ☐

From North-West to South-West ☐

From North-West to South-East ☐

Tick (✓) the correct box.



OR

12B. DISTANCE ON A MAP

Look at the Ordnance Survey map supplied with this paper.

The straight line distance ('as the crow flies') from the bridge at **G 688 364** to the Post Office at **G 674 421** is:

3.5 kilometres ☐

6 kilometres ☐

12 kilometres ☐

Tick (✓) the correct box.

13. AERIAL PHOTOGRAPH

Look at the aerial photograph supplied with this paper.

The extract taken from the aerial photograph shown opposite is located in the:

Right foreground ☐

Left middleground ☐

Left background ☐



Tick (✓) the correct box.

14. URBAN STUDIES

The photograph opposite was taken by a traffic camera during the evening rush hour.

The line of traffic is:

Leaving the city. ☐

Entering the city. ☐



Amended from www.dublinlive.ie

Tick (✓) the correct box.

15. SETTLEMENT IN THE NETHERLANDS

The photograph opposite shows settlement in the Netherlands, built on land reclaimed from the sea.

This land reclaimed from the sea is known as a:

Polder ☐

Floodplain ☐

Dyke ☐



Amended from www.theberlage.nl

Tick (✓) the correct box.

16. ECONOMIC ACTIVITIES



Amended from www.nurse.com, www.anpost.ie, www.dublinlive.ie

Look at the photographs above.

Medical workers, postal workers and firefighters are all examples of:

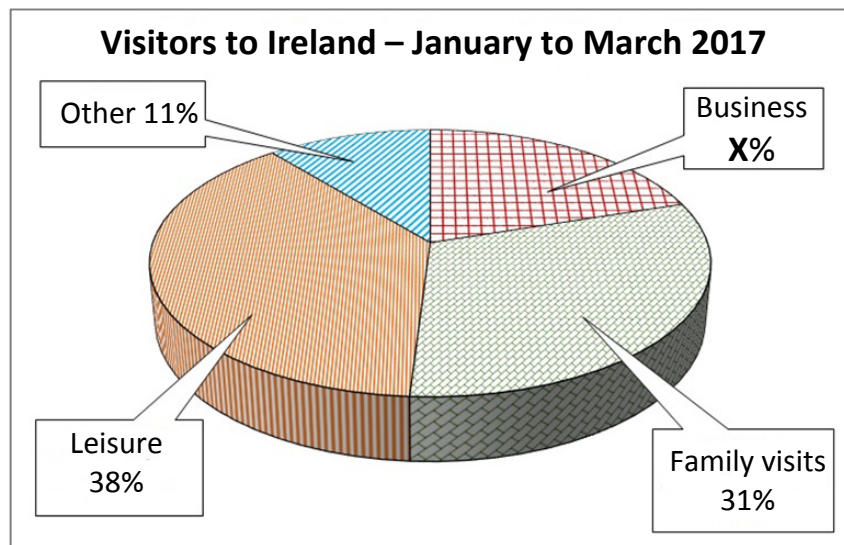
Secondary workers ☐

Tertiary workers ☐

Primary workers ☐

Tick (✓) the correct box.

17. STATISTICS



Amended from CSO

Look at the pie chart above. It shows the reasons why visitors came to Ireland between January and March 2017.

The percentage of visitors who came to Ireland on business, (X) was:

10% ☐

15% ☐

20% ☐

25% ☐

Tick (✓) the correct box.

18. SETTLEMENT

Look at the map extract opposite.

The main settlement pattern shown is:

Clustered / nucleated ☐

Dispersed ☐

Linear ☐



Tick (✓) the correct box.

19. GRID REFERENCES

Look at the Ordnance Survey map supplied with this paper.

The grid reference for Benbulbin Mountain is:

G 46 70 ☐

G 69 46 ☐

G 70 46 ☐

G 46 69 ☐

Tick (✓) the correct box.

20. GRID REFERENCES

Look at the Ordnance Survey map supplied with this paper.

The feature at **G 701 370** is a:

Post Office ☐

Church ☐

Youth Hostel ☐

Megalithic Tomb ☐

Tick (✓) the correct box.



Coimisiún na Scrúduithe Stáit State Examinations Commission

JUNIOR CERTIFICATE EXAMINATION, 2018

GEOGRAPHY – ORDINARY LEVEL

SECTION 2 (90 marks)

FRIDAY 8 JUNE – MORNING 9:30 – 11:30

SECTION 1 of this paper is in a separate folder, where spaces are provided for your answers.

PLEASE REMEMBER TO RETURN YOUR COMPLETED **SECTION 1 FOLDER** WITH YOUR ANSWER BOOK.

SECTION 2 (90 marks)

Answer any **THREE** questions.

All questions carry equal marks.

Question 1. ORDNANCE SURVEY MAP

Study the Ordnance Survey map of Sligo supplied with this paper.

1A. Draw a sketch map of the area shown on the Ordnance Survey map.

On your sketch map **show** and **label** each of the following:

- The coastline
- The built up area of Sligo
- Glencar Lough
- The Drumcliff River.

(10)

1B. Using evidence from the Ordnance Survey map, explain **THREE** reasons why people would go on holiday to the area shown on the map.

(10)

1C. (i) 'The area shown on the map has a long history of settlement.'

Name **TWO** different examples of historic settlement **and** give the grid reference of the location of **ONE** of them.

(ii) Using evidence from the Ordnance Survey map, explain **TWO** reasons why there is no settlement in the area around **G 72 46**.

(10)

Question 2. AERIAL PHOTOGRAPH

Study the aerial photograph of Sligo supplied with this paper.

NOTE: Remember - this is an oblique aerial photograph. Therefore, you must use the **correct terms**, such as left background, right foreground, etc.

2A. Draw a sketch map of the area shown on the aerial photograph.

On your sketch map **show** and **label** each of the following:

- **TWO** connecting streets
- The river
- A bridge
- A sports ground.

(10)

2B. There is a large shopping centre with a car park in the **centre foreground** of the aerial photograph.

- (i) Describe **ONE** advantage of this location for the shopping centre.
- (ii) Describe **ONE** disadvantage of this location for the shopping centre.
- (iii) Shopping (retail) is one land-use in Sligo.

Name **and** locate (using the correct terms), **TWO** other land-uses in Sligo evident on the aerial photograph.

(12)

2C. Explain **TWO** reasons why the town of Sligo developed at this location, using evidence from the aerial photograph to support each reason.

(8)

Question 3. SHAPING THE EARTH'S SURFACE

3A. Rocks

- (i) Name **ONE** rock that you have studied **and** state if it is an Igneous **or** a Sedimentary **or** a Metamorphic rock.
- (ii) Describe how the rock you have named in part (i) above was formed.
- (iii) Explain **ONE** reason why people might object to a quarry being located near their home.

(10)

3B. Rivers

- (i) Name **ONE** feature formed by **river erosion**.
- (ii) Explain, with the aid of a diagram, how this feature was formed.
- (iii) Examine the photograph of the Hydro-Electric Power station with its dam and lake below.



Describe **ONE** problem that can arise as a result of dams.

(10)

3C. Volcanoes

- (i) Draw a diagram of a volcano.

On it **show** and **label** each of the following:
 - the cone
 - the crater
 - a lava flow.
- (ii) Describe **TWO** effects of a volcano erupting.

(10)

Question 4. POPULATION AND URBAN STUDIES

4A. Population Change

- (i) Explain how any **TWO** of the following factors influence the rate at which population changes:
- Food supply
 - War
 - Health
 - Technological developments.
- (ii) Describe how the place of women in society has changed over the last hundred years. (10)

4B. Census of Population

An Age Profile of Ireland – Census 2016

Population by Age Group		Number	Change
Children	Pre-school age	331,515	Down 7.0%
	Primary school age	548,693	Up 8.8%
	Secondary school age	371,588	Up 7.7%
Adults	19-24 years	331,208	Down 6.5%
	25-64 years	2,541,294	Up 1.9%
	65 years and over	637,567	Up 19.1%

Amended from www.cso.ie

Look at the information in the table above.

- (i) How many adults were aged between 19 and 24 years in 2016?
- (ii) What was the percentage increase in the number of adults aged 65 years and over?
- (iii) In which **TWO** age groups did the number of people decrease by 2016?
- (iv) Describe **ONE** effect of the increase in the number of children in the primary school age group.
- (v) Describe **ONE** effect of the increase in the number of adults aged 65 years and over. (10)

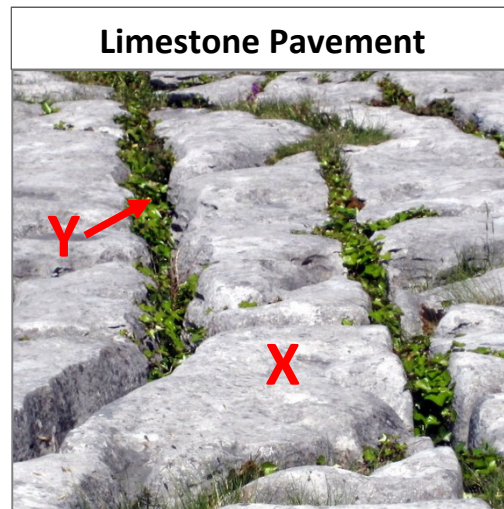
4C. Urban Problems

- (i) Name **ONE** city in the **developing world** that you have studied.
- (ii) Explain **ONE** problem experienced by people living in cities in the developing world.
- (iii) Name **TWO** other problems experienced by people living in cities in the developing world. (10)

Question 5. GEOGRAPHICAL MIX

Answer **ANY THREE** of the questions **5A, 5B, 5C, 5D**.

5A. Chemical Weathering in the Burren



Amended from www.amazingancient.com

- (i) What are the names given to the slab at **X** and gap **Y** in the photograph above?
- (ii) Explain how chemical weathering has formed this limestone pavement.
- (iii) Describe **ONE** problem that increased tourism might bring to the Burren.

(10)

5B. Mixed Farming

A mixed farm has crops and animals.

- (i) Name **ONE** crop grown on a mixed farm **and** describe **ONE** process that takes place on the farm relating to this crop.
- (ii) Name **ONE** type of animal kept on a mixed farm **and** describe **ONE** process that takes place on the farm relating to this animal.
- (iii) Name **TWO** outputs from the farm.

(10)

5C. Natural Resources

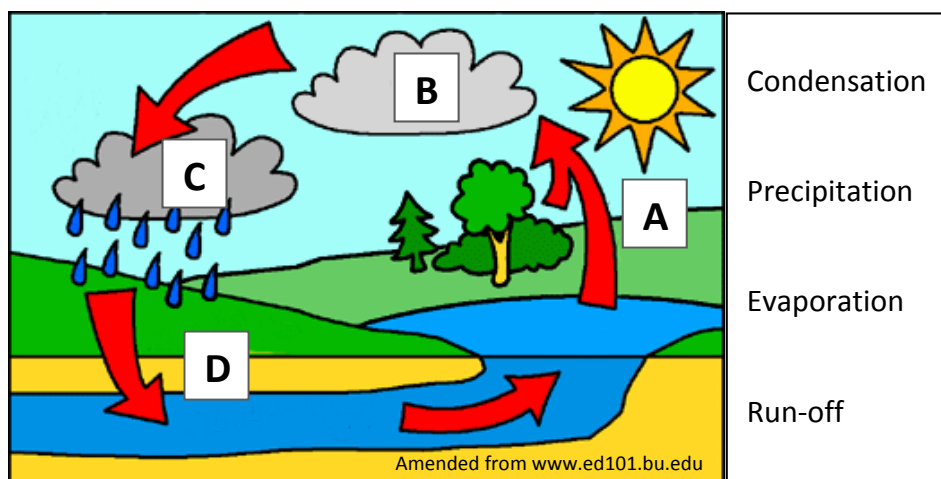


Amended from sportfishingmag.com; Irish Times; nauticexpo.com; fiskerforum.dk

- (i) Explain what is meant by the term *renewable resource*.
- (ii) Explain **TWO** reasons why overfishing is occurring.
- (iii) Name a sea area where overfishing has taken place.

(10)

5D. The Water Cycle



- (i) Using the diagram and the terms in the box above, explain the **water cycle**.
- (ii) Name **TWO** ways people use water.

(10)