



Coimisiún na Scrúduithe Stáit
State Examinations Commission

LEAVING CERTIFICATE EXAMINATION, 2009

WRITE YOUR EXAMINATION NUMBER HERE 

MUSIC – ORDINARY LEVEL
COMPOSING (100 marks)
THURSDAY 18 JUNE – AFTERNOON 3.15–4.45

STAMPA AN IONAIID
(Centre Stamp)

Móriomlán
na marcanna

DON SCRÚDAITHEOIR

CEIST	MARC
1	
2	
3	
4	
5	
6	
IOM	
GRÁD	

INSTRUCTIONS TO CANDIDATES

- Write your examination number, as required, in the box above.
- Answer the questions in the spaces provided in this question-answer book.
- You may use the spaces in the middle and at the end of the question-answer book for rough work.

1. Total of end of page totals	
2. Aggregate total of all disallowed questions	
3. Total mark awarded (1 minus 2)	

BLANK PAGE

Answer TWO questions – ONE from Section A (Melody Composition) and ONE from Section B (Harmony)

SECTION A – MELODY COMPOSITION (40 marks)

Answer ONE QUESTION ONLY in this section: Q1 or Q2 or Q3. Note that both Q1 and Q3 contain two sections.

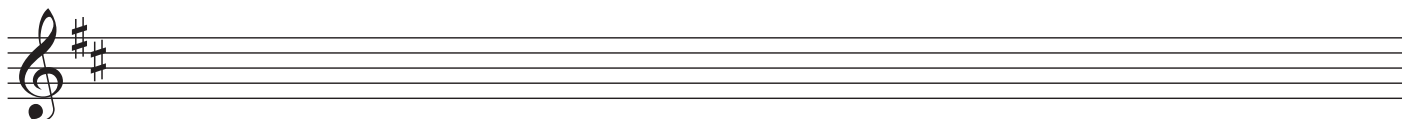
Q.1 CONTINUATION OF A GIVEN OPENING

In the case of both (a) and (b),

- Continue the given opening to make an eight-bar melody, ending on the keynote, that is, doh.
- Add appropriate phrasing and expression marks to the melody.
- Choose a suitable instrument for each of your melodies from the list given:

(a) violin trumpet flute clarinet

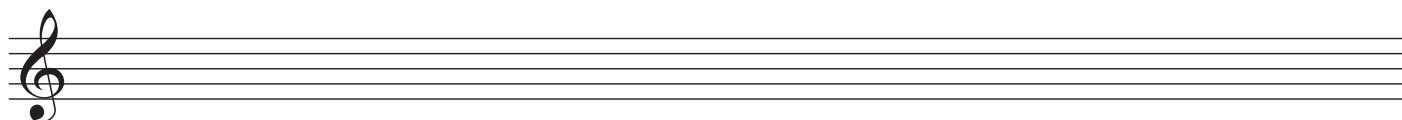
Andante



AND

(b) violin trumpet flute clarinet

Allegro



Q.2 SETTING MUSIC TO A GIVEN TEXT

Study the following verse:

Up she flew and soared so high,

Circling, circling in the sky,

Sun and moon and stars stood by,

Ever silent, ever shy.

- The first two lines have been set to a rhythm. Compose a rhythm to fit the remaining words.

Sun and moon and stars stood by,

Ev - er sil - ent ev - er shy.

- Using this rhythm, compose a melody of eight bars, beginning as indicated and ending on the key note, that is, doh.

- Add appropriate phrasing and expression marks to the melody.

Q.3 COMPOSING TO A GIVEN DANCE RHYTHM OR METRE OR FORM

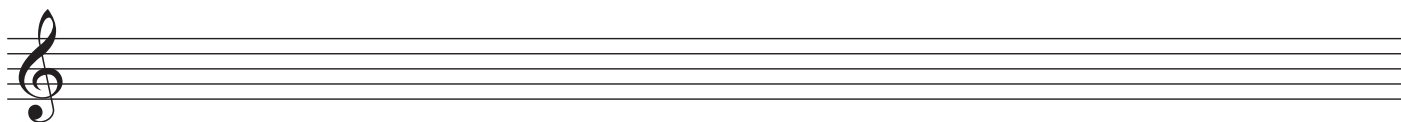
Answer (a) *and* (b).

(a) Study this opening of a waltz.

- Complete the first phrase.
- Compose an answering phrase, ending on the keynote, that is, doh.
- Add appropriate phrasing and expression marks to the melody.
- Choose a suitable instrument for your melody from the following list:

oboe flute trumpet horn

Moderato



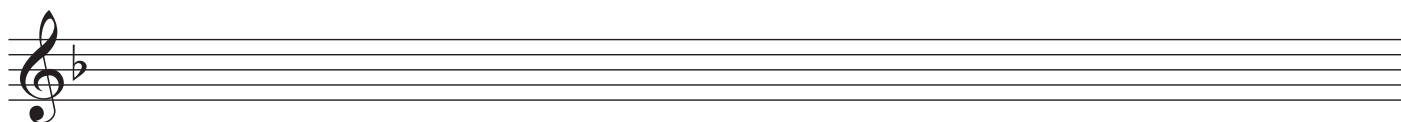
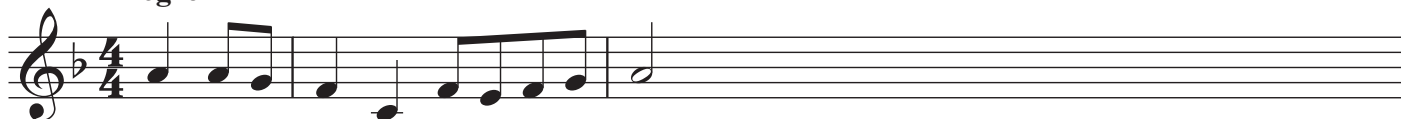
AND

(b) Study this opening of a gavotte.

- Complete the first phrase.
- Compose an answering phrase, ending on the keynote, that is, doh.
- Add appropriate phrasing and expression marks to the melody.
- Choose a suitable instrument for your melody from the following list:

oboe clarinet violin horn

Allegro



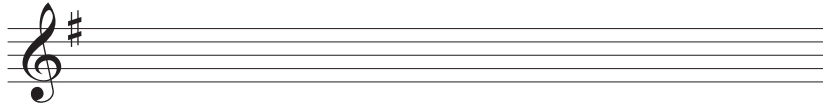
SECTION B – HARMONY (60 marks)

Answer ONE QUESTION ONLY in this section: Q4 or Q5 or Q6

Q.4 COMPOSING MELODY AND BASS NOTES FROM A SET OF CHORDS

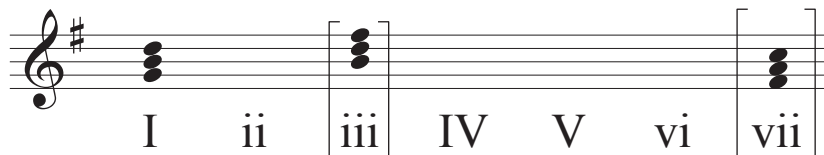
PREPARATORY WORK

- Write out the scale of G major on the staff below:

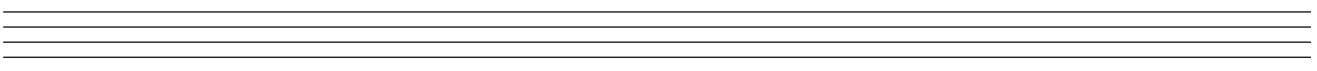
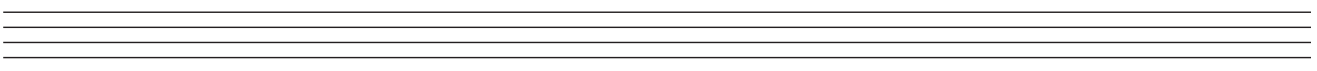
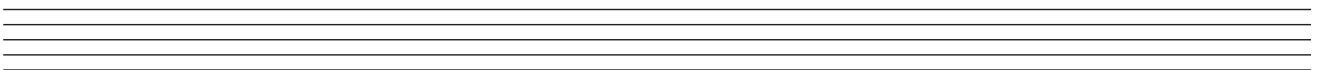


- Plot the chords available in this key (I, ii, IV, V, and vi) either in the chord bank grid *or* on the staff below. The first chord is given.

Notes of chord	D		F#				C
	B		D				A
	G		B				F#
Chord symbol	G		Bm				F#dim
Roman numeral	I	ii	iii	IV	V	vi	vii



ROUGH WORK



- Study the piece of music below.
- Using the given rhythms, add melody and bass notes to complete the cadences and approach chords as follows:
 - At A, an INTERRUPTED cadence with approach chord (IV—V—vi)
 - At B, an IMPERFECT cadence with approach chord (I—IV—V)
 - At C, a PLAGAL cadence with approach chord (vi—IV—I)
 - At D, a PERFECT cadence with approach chord (ii—V—I)

System 1: Treble clef, bass clef, key signature of one sharp (F#), 3/4 time signature. Measure 3 is marked 'A' and contains a dotted quarter note, a quarter note, and a dotted quarter note. Measure 4 is empty.

System 2: Treble clef, bass clef, key signature of one sharp (F#), 3/4 time signature. Measure 3 is marked 'B' and contains a dotted quarter note, a quarter note, and a dotted quarter note. Measure 4 is empty.

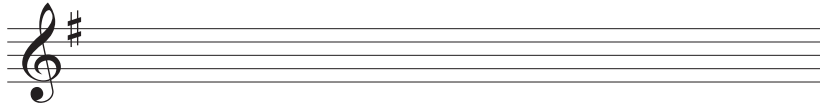
System 3: Treble clef, bass clef, key signature of one sharp (F#), 3/4 time signature. Measure 3 is marked 'C' and contains a dotted quarter note, a quarter note, and a dotted quarter note. Measure 4 is empty.

System 4: Treble clef, bass clef, key signature of one sharp (F#), 3/4 time signature. Measure 3 is marked 'D' and contains a dotted quarter note, a quarter note, and a dotted quarter note. Measure 4 is empty.

Q.5 ADDING BASS NOTES AND CHORD INDICATIONS AT CADENCE POINTS

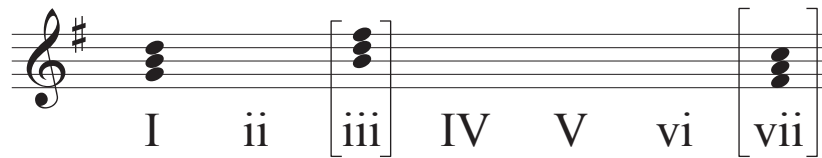
PREPARATORY WORK

- Write out the scale of G major on the staff below:

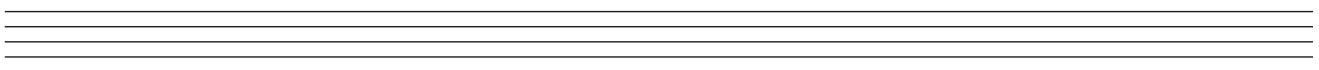
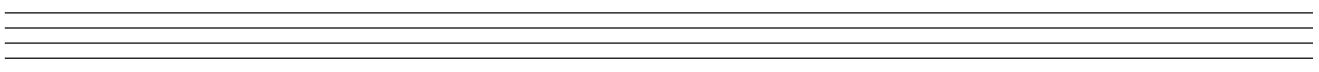
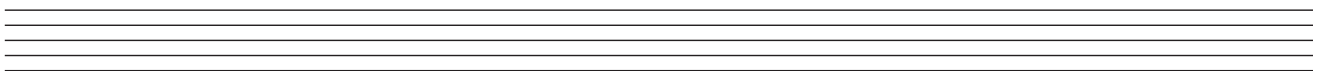


- Plot the chords available in this key (I, ii, IV, V, vi) either in the chord bank grid *or* on the staff below. The first chord is given.

Notes of chord	D B G		F# D B				C A F#
Chord symbol	G		Bm				F#dim
Roman numeral	I	ii	iii	IV	V	vi	vii



ROUGH WORK

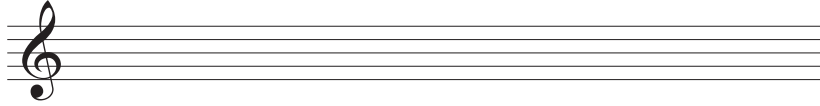


- Study the piece of music below.
- Add suitable bass notes and chord indications to complete the cadences at A, B, C and D.
- You may use either chord symbols *or* Roman numerals, but not both.

Q.6 ADDING DESCANT NOTES AND CHORD INDICATIONS AT CADENCE POINTS

PREPARATORY WORK

- Write out the scale of C major on the staff below:

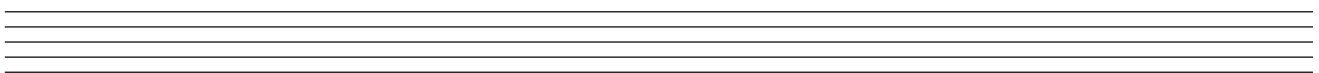
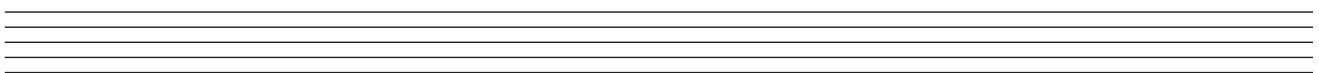
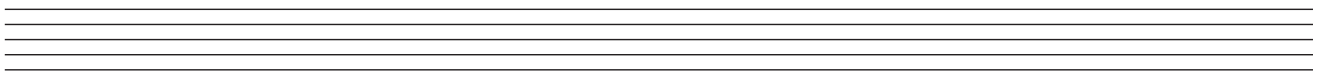


- Plot the chords available in this key (I, ii, IV, V, vi) either in the chord bank grid *or* on the staff below. The first chord is given.

Notes of chord	G E C		B G E				F D B
Chord symbol	C		Em				B ^{dim}
Roman numeral	I	ii	iii	IV	V	vi	vii



ROUGH WORK



- Study the piece of music below.
- Complete the phrase endings by adding suitable chords and descant notes at A, B, C and D.
- You may use either chord symbols *or* Roman numerals, but not both.

Descant

Melody

Bass

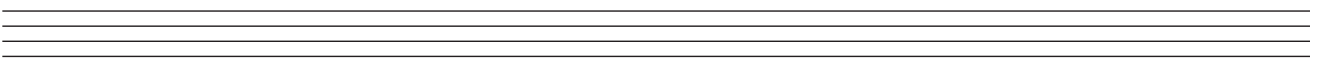
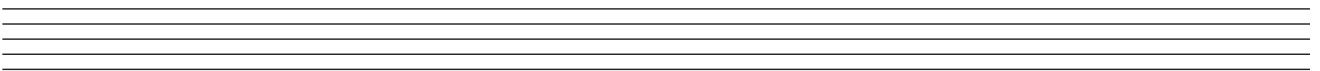
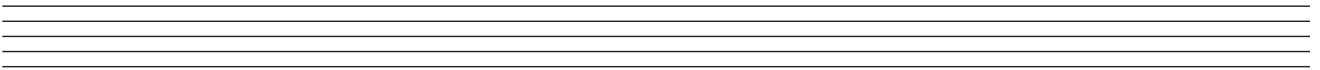
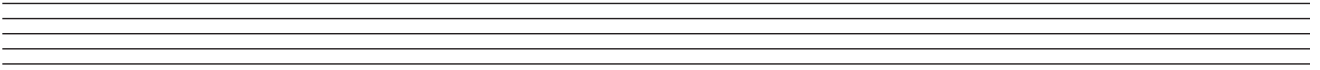
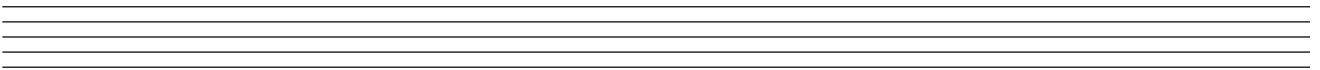
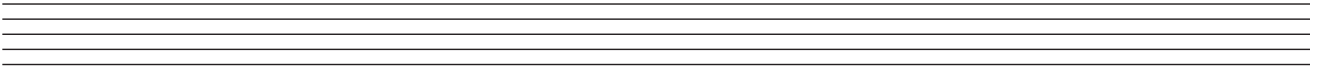
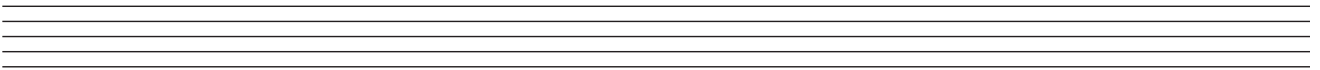
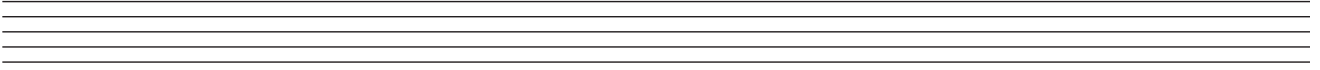
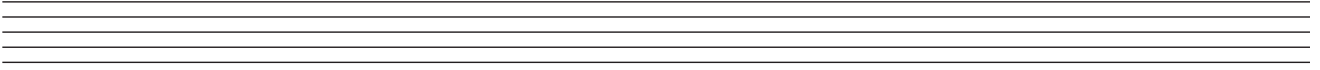
A

B

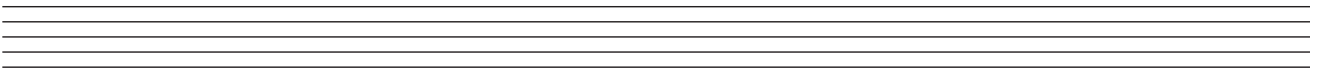
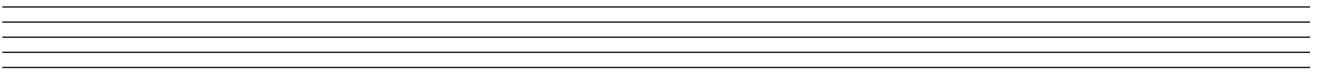
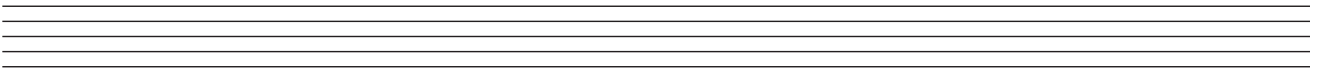
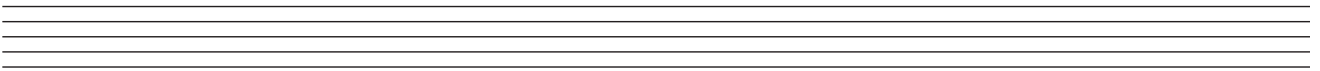
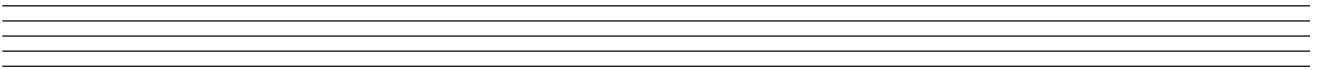
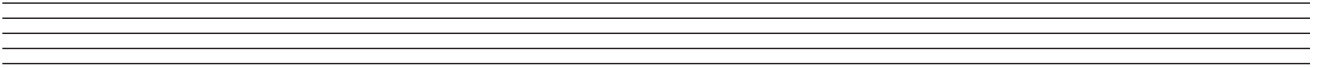
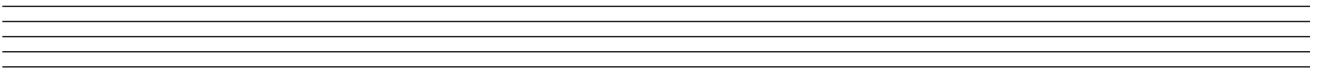
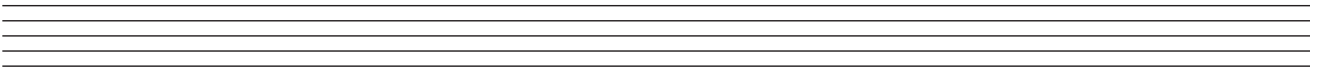
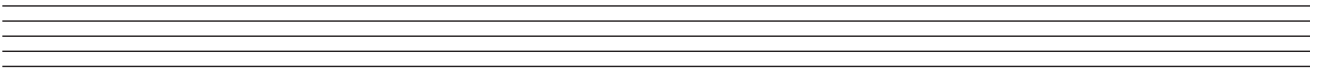
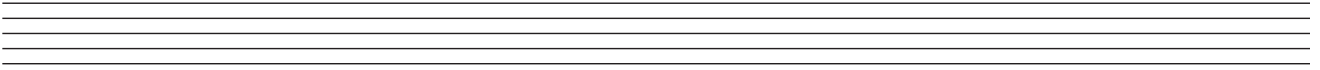
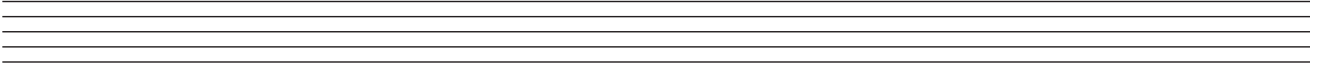
C

D

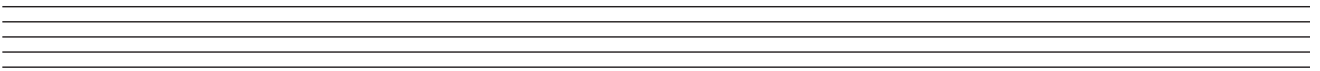
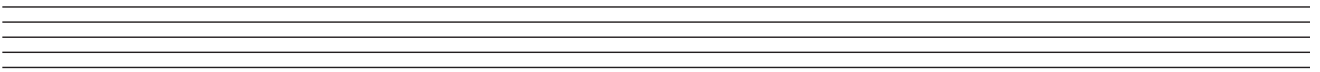
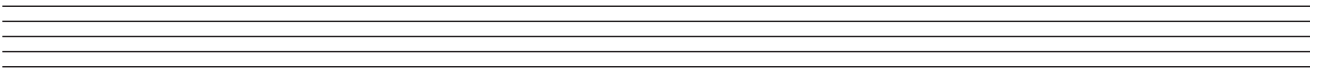
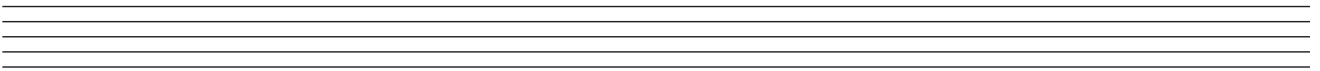
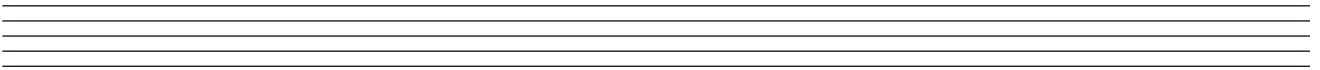
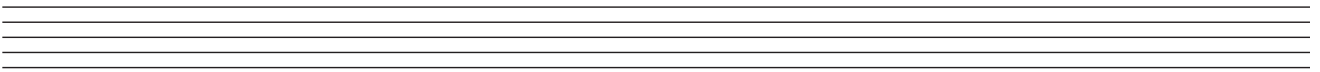
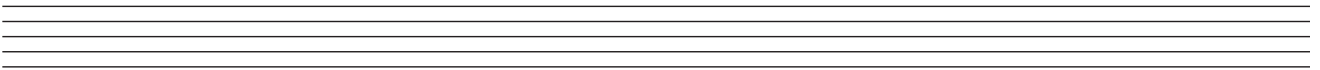
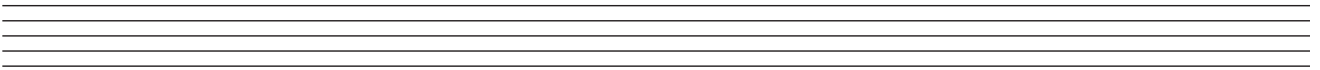
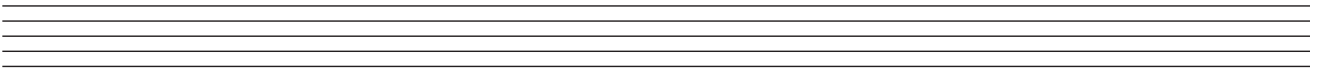
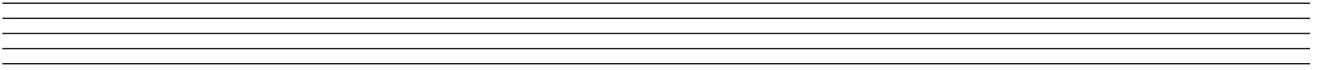
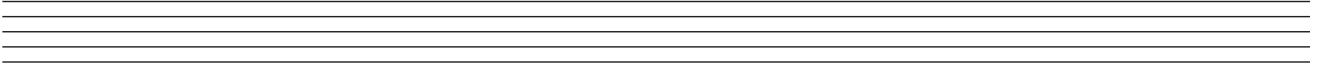
ROUGH WORK



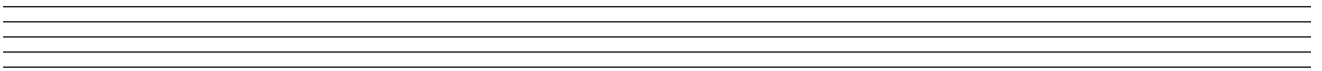
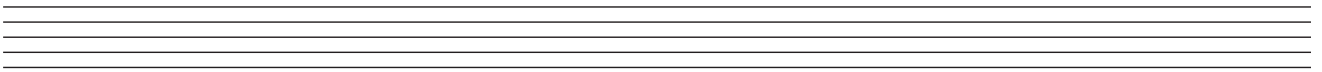
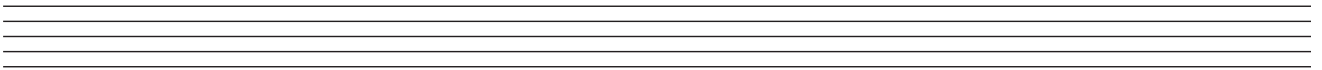
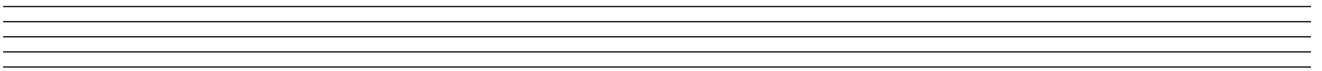
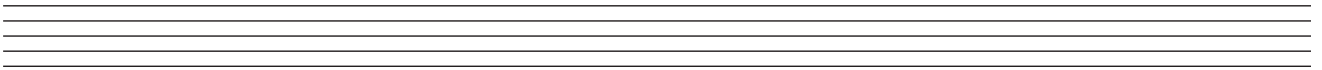
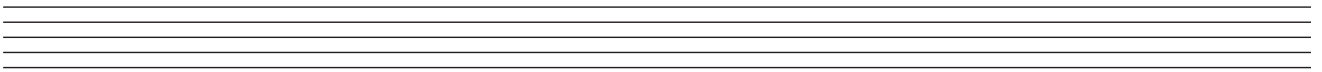
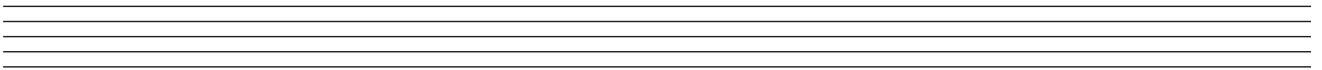
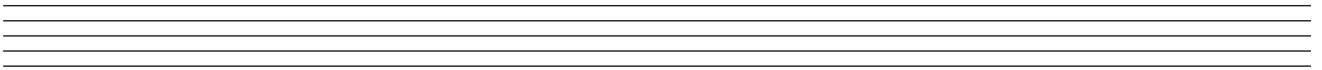
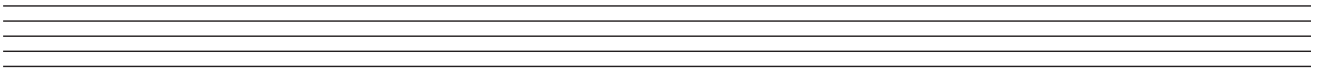
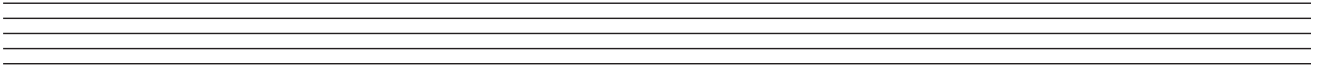
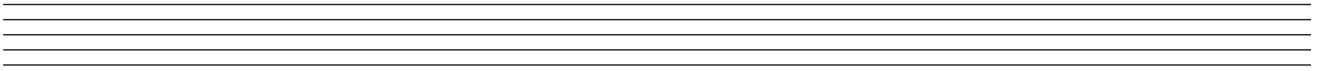
ROUGH WORK



ROUGH WORK



ROUGH WORK



BLANK PAGE